

# A TREE ALONG A POEM ON THE SHORE

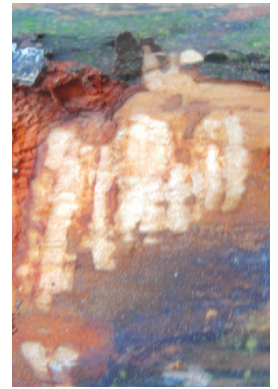
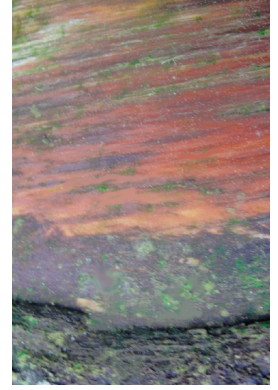


Sketchbook Communications: art books

Susana Roque



# A TREE ALONG A POEM ON THE SHORE





# A TREE ALONG A POEM ON THE SHORE



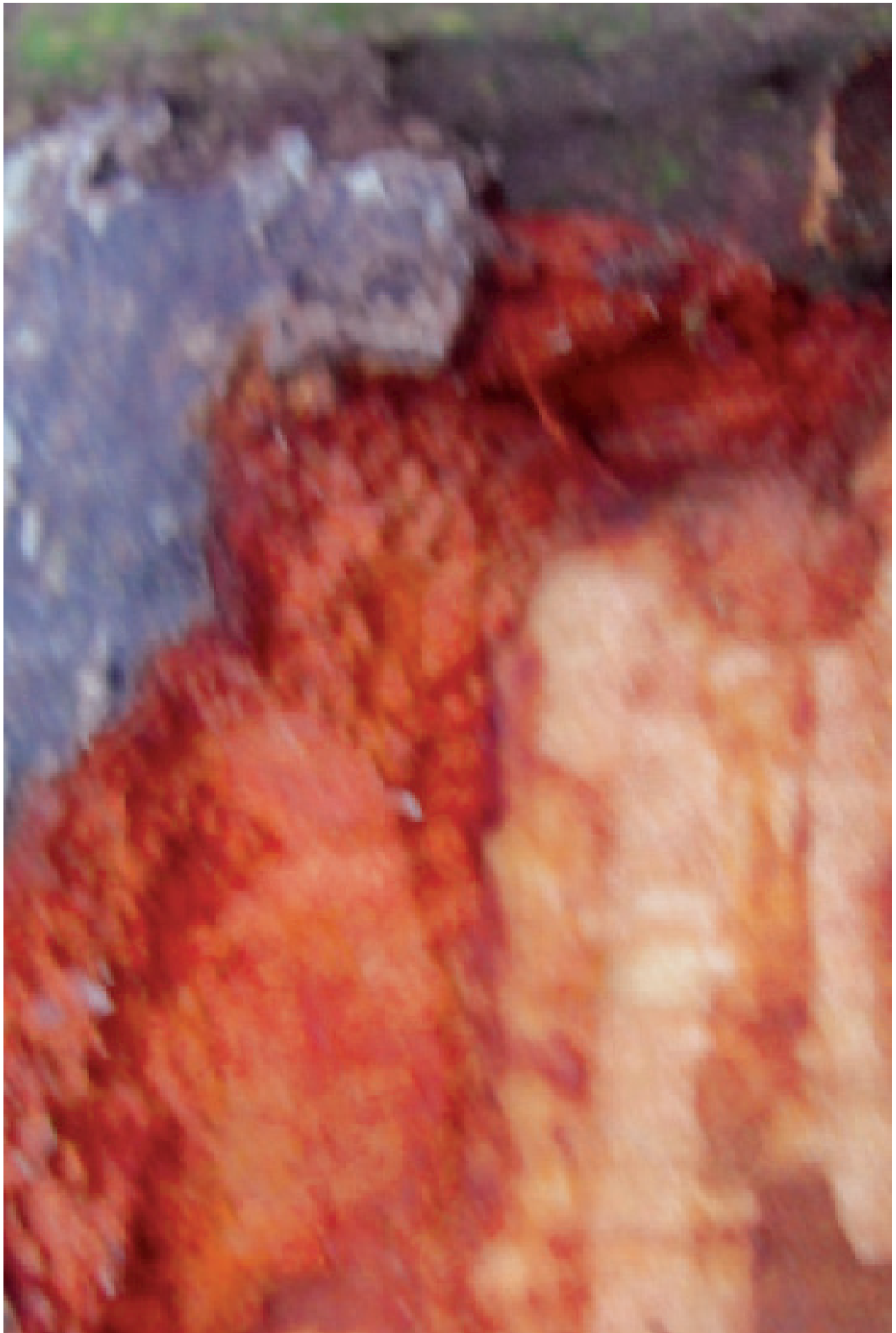
## A TREE ALONG A POEM ON THE SHORE

This is a sample of a photography project/installation has fifteen photographs of bark (10" x 6.7") that I took in Vancouver, at the Stanley Park sea wall, along the shore. This is a series of art work for an interactive art book on the web that I am working on, *The Lighthouse, the Bird and the Poem on the Shore* ([www.thepoemontheshore.com](http://www.thepoemontheshore.com)). These pictures can be an art installation on a wall or a small photography book which can be downloaded on the web, an ebook.

These pictures of a log at the sea wall take me into this narrative to respond to questions which I can only really ask there by reflecting on what I am searching for visually to understand events about life and loss. I suppose we tend to look at things we want. So, there must be a reason that I am selecting these particular pictures to tell my story. What is it about us that stays and leaves in what comes and goes in the margins of the shore? How do we illustrate this dialogue to find our own poem along the shore? If we take enough pictures on a question, the answers may eventually begin to take shape on the screen.

Thank you always for looking at my art.

Susana Roque













# A TREE ALONG A POEM ON THE SHORE

Copyright © Susana Roque and Sketchbook Communications 2016, All rights reserved

Please note that it is not being sold for commercial purposes.

All rights reserved. The use of any part of this publication for commercial reproduction or transmission, in any form or by any means - electronic, mechanical, photocopied, performance, recorded, or stored in any retrieval system, without the prior written consent of the publisher- is an infringement of copyright law under the Canadian Copyright Licensing Agency.

The art work and writing in this photography book sample is the property of Sketchbook Communications in an electronic (dvd, web, photographic) and book form. Only Sketchbook Communications and the artist has the rights to publish, copy or redistribute the work for commercial use, any other means of doing this is against the law. The work belongs to the company and the artist until there is a written agreement to sell it or provide copyrights.

All the terms of use, subscriber's agreements and privacy policy that are on this website apply with this purchase.

They are listed in further detail at the bottom of this website.

For more information, please contact Susana Roque at [www.sketchbookcommunications.com](http://www.sketchbookcommunications.com)

# A TREE ALONG A POEM ON THE SHORE



Thank you for looking at my work.  
I hope that you enjoyed the ebook sample.

Susana Roque  
[www.sketchbookcommunications.com](http://www.sketchbookcommunications.com)